



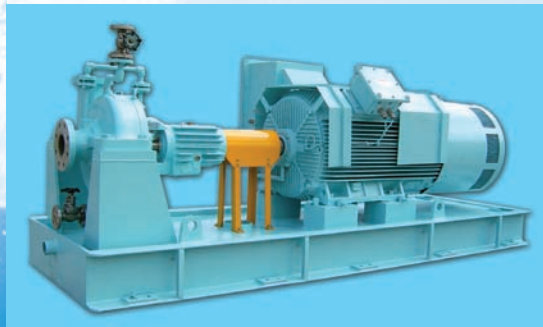
a New Vision for Quality Pumps

TRUFLO API Series

API 610 10th Edition Process Pumps

- **Quick Deliveries**
Single stage: 25 weeks ex factory
Multistage 30 weeks ex factory
- **Complete packages or replacement pumps, multiple drive types**
- **New, state of the art testing facilities with test capabilities up to 2500HP**
- **Most pumps are current API release**

Please consult factory concerning above mentioned typical deliveries as delivery dates may change



Truflo Pump

Truflo Pump is a worldwide process pump manufacturer located in Colfax, North Carolina. Our operations include four direct production facilities located worldwide as well as many local support facilities. The current Truflo Company has been manufacturing pumps for 24 years with seven of these years spent manufacturing pumps under the Truflo Trademark brand name as you see worldwide today.

Truflo has developed a wide variety of process pumps for a various types of industry including: refineries, petrochemical plants, chemical plants, paper mills, mining, pharmaceutical, steel, textiles, food and beverage, plating, chemical injection, pipelines, boiler feed, power and utility, automotive, and OEMs.

• DAP Series – Our heavy duty, ANSI process pumps are capable of flow ranges to 6,000-gpm and heads to 732-ft. Metallurgies include DCI,

cf8m, CN7M, CD4, Hastelloy B&C, Nickel, Monel and Titanium.

- MAP Series – Our metallic series magnetically driven ANSI pumps are capable of flows to 1000-gpm and heads to 426-ft. Metallurgies include DCI, CF8M, CN7M, CD4, Hastelloy B&C, Nickel, Monel and Titanium.
- DSP Series – Our self-priming pumps offer flow ranges to 1400-gpm with heads to 396-ft. Metallurgies include DCI, CF8M, CN7M, CD4, Hastelloy B&C, Nickel, Monel and Titanium.
- TSP Series – Our API 610 10th edition pumps offer a full range of capacities with impeller sizes to 23-in and heads available above 1000-ft. Most materials available.
- TMP Series – Our API 685 magnetically driven pumps offer sealed designs to meet demanding API



applications. Flow capabilities exceed 2000-gpm with heads to around 1,000-ft. 200+ HP capabilities as well as most material combinations are available.

- TSMP Series – Our multistage API pumps offer a wide variety including a pressure range to 2,500-psi + and flow ranges to several thousand GPM. Most material combinations available
- TNP Series – Our TNP lined magnetically driven ANSI pumps provide a wide range of chemical compatibilities. Flow ranges from a few gpm to 700-gpm and heads to over 300-ft are available.
- TDX Series – Our newest fractional HP magnetically driven all plastic pumps allow the small flow ranges that many chemical pumping applications require.

We at Truflo hope to gain your confidence as the only brand of pumps that you will ever need to consider purchasing. We look forward to the opportunity to prove this to you and to service your requirements. Please call us or email us anytime.

TRUFLO Pumps, Inc.
256 Little Santee Rd.
Colfax, NC 27235
336-664-9225
Fax: 336-664-1353
www.truflo.com
Sales@TRUFLO.com

Circle 158 on card or go to psfreeinfo.com

a New Vision for Quality Pumps

TRUFLO TSP Series
 API 610 10th Edition
 Single Stage Process Pump

- 27 Sizes (Single Stage Only)
- Maximum Capacity: 20,000 gpm
- Maximum Head: 1200'
- Enclosed Impeller (Investment Casting)
- Excellent Interchangeability

OTHER TYPES*

- Multi-Stage Turbine Pump
Maximum Capacity: 4,000 gpm, Maximum Head: 2700 psi
- Double Suction Pump
- Vertical Can Pump

*For more details, please contact us.

TRUFLO 256 Little Santee Road • Colfax, NC 27235
 800-789-1864 • www.truflo.com

circle 158 on card or go to psfreeinfo.com